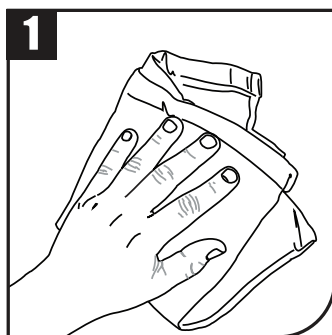
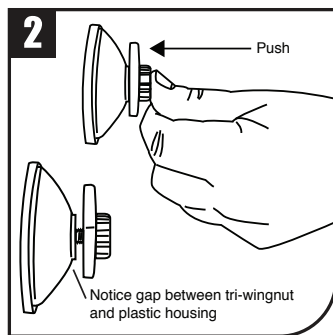


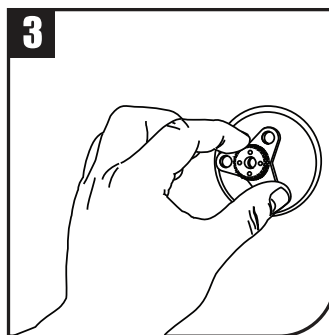
IMPORTANT: 24-48 hours after you first install, firmly try to retighten tri-wingnut. Sometimes after installing, there is a slight compression of the suction cup material and additional tightening is helpful to keep an optimal vacuum seal. Repeat every 30 days.



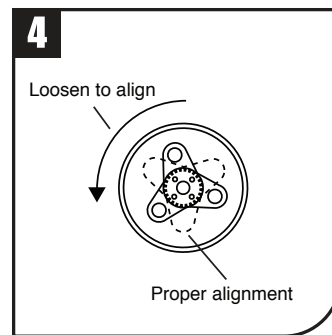
Clean surface (alcohol swab preferable), see surface recommendations below.



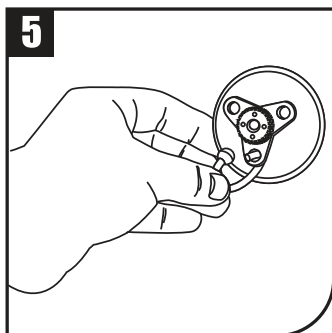
Make sure tri-wingnut is loose. Press suction cup against surface as shown to remove air and create a vacuum bond to the surface.



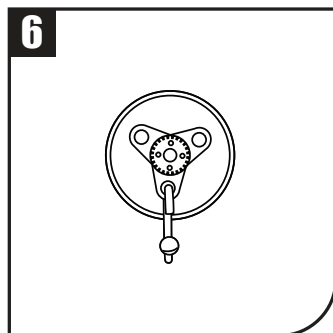
As you push firmly towards surface, tighten tri-wingnut clockwise until it stops at end of threads.



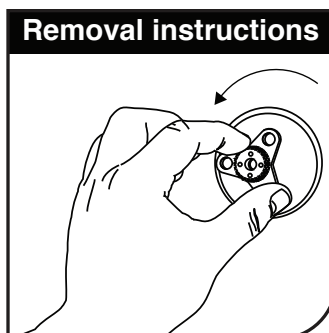
If needed, rotate the tri-wingnut slightly counter clockwise until tip points towards the ground.



Install hook after proper alignment.



Hook is now ready to use; holds up to 22 lbs.



Removal instructions

To remove suction cup from surface, turn tri-wingnut counter clockwise until loose. Grab top of suction cup edge with fingers and pull away from surface to break suction and remove.

Note:
A suction cup is not considered a permanent fastener like screws, nails, epoxies and other hardware fasteners.

IMPORTANT:

- Choosing the correct type of surface for the suction cup is the most important first step. Next, clean the surface with an alcohol swab, or a cloth with rubbing or denatured alcohol. Cleaning is always needed before installing. Then wait for the surface to dry.
- Always tighten the tri-wingnut as snugly as you can with the hook pointing towards the floor as shown in (6) above.
- If you're hanging items with weights in the range of 15-22 pounds, it's especially important to firmly try to tighten the tri-wingnut every 30 days to make sure the suction cup has maintained the vacuum seal and is flat against the surface. If it isn't flat, simply remove and re-install as described above.
- If you notice the unit slipping, it's best to remove weight from the hook and re-install the suction cup.
- If you have an item that's too bulky for the hook size, try wrapping a string, thin rope, tie-wrap, etc., around the item and hang onto the hook by this means.

ONLY USE THE SUCTION HOOK ON FLAT, NONPOROUS POLISHED SURFACES.

Examples are:

Shiny subway or porcelain tile

Glass

Plastics

Baked enamel**

Plexiglas®

Fiberglass

Powdered coated metal*

Mirror

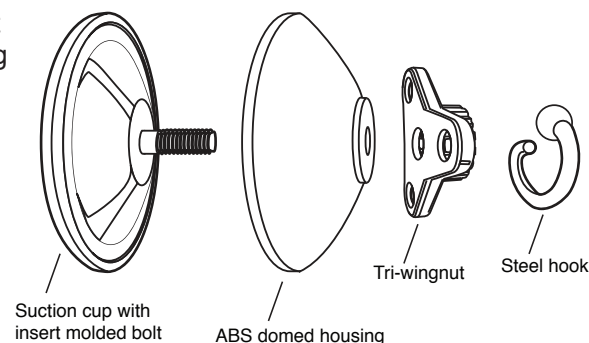
Acrylic plastic

Dry erase board

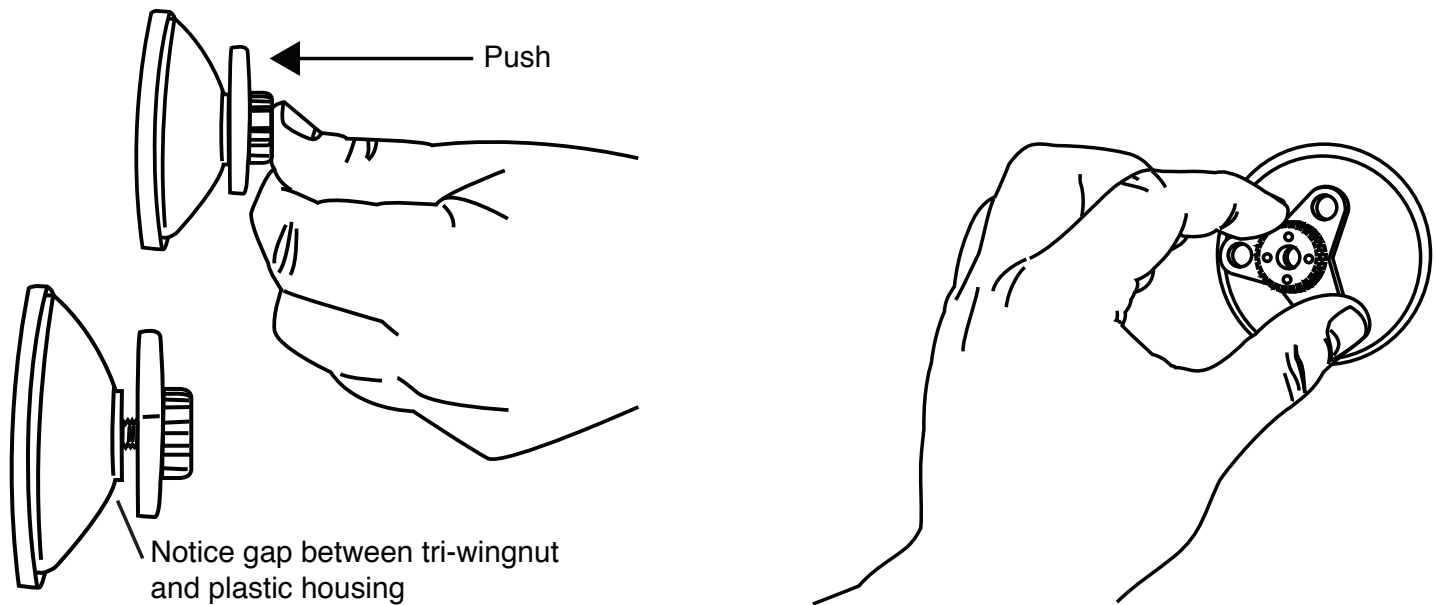
Stainless steel

*file cabinets and machine tool panels

**appliances like refrigerators



If you have any technical questions or would like further information about using the Pro Suction Hooks, please call us at 530.345.8000, visit our website www.prosuctionhooks.com, or email info@ustcmail.com. If you call and leave a voice mail, we will return the call ASAP.



REMINDER

The illustrations above are very important as visual REMINDERS along with the instructions:
TO PRESS the suction cup against the surface to remove air and to create a vacuum bond to the surface;
and TO FIRMLY PUSH TOWARDS THE SURFACE AS YOU TIGHTEN THE TRI-WINGNUT.

The Pro Suction Hook is not considered a permanent installation like using screws, nails, epoxies and other hardware fasteners. It's a mobile product ideal for flexibility on a variety of surfaces not suitable for hardware fasteners or epoxies. Also the suction cup product is good for adjusting, moving and remounting according to your changing requirements.

If you desire long term placement, it's fine to use Pro Suction Hooks so long as you check the tightness and make adjustments of the tri-wingnut as described in the instructions to keep a good suction.

CHECK OUR WEBSITE FOR VIDEO INSTRUCTIONS AND GIVE US A CALL IF YOU HAVE ANY QUESTION AT ALL.